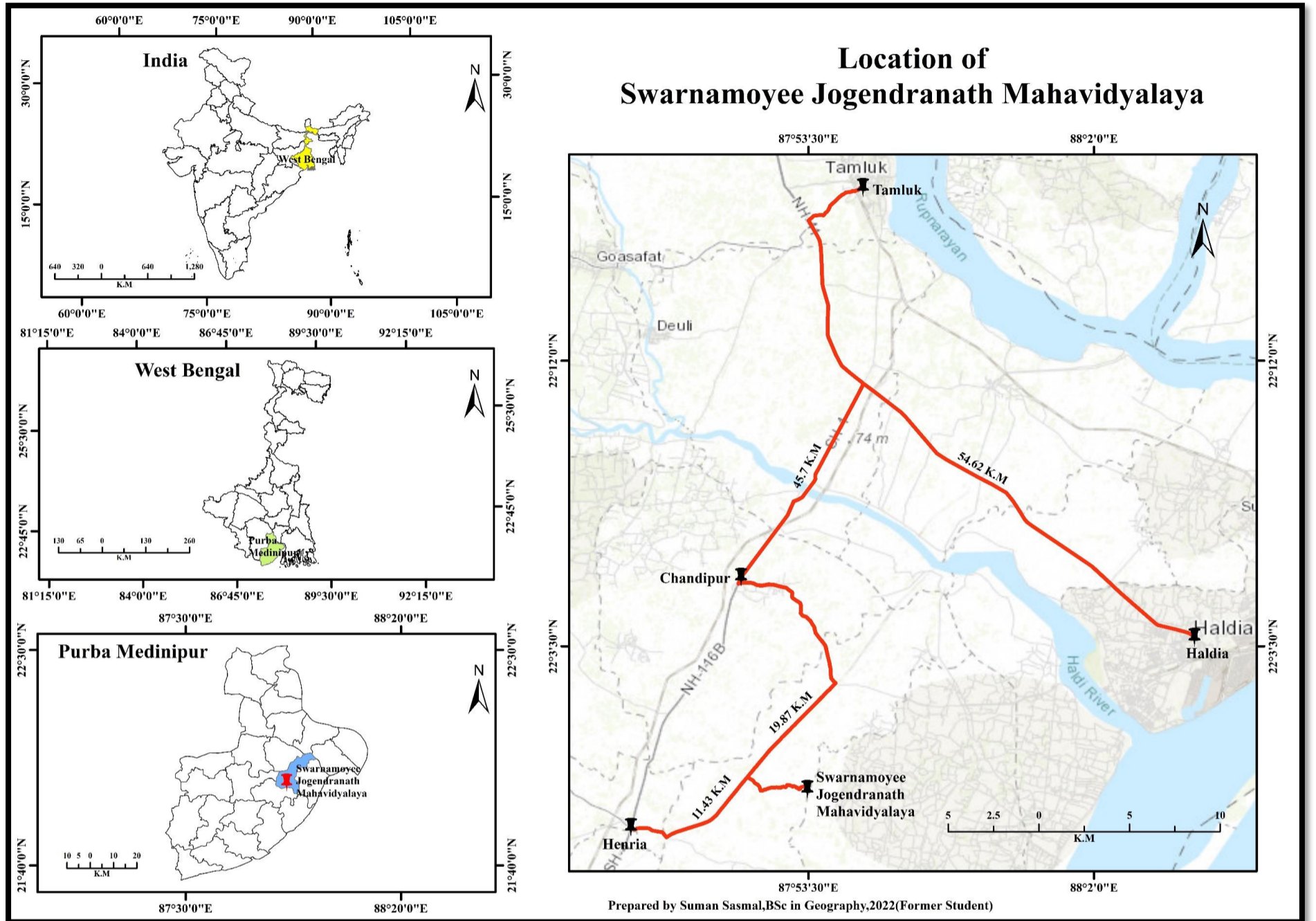




SWARNAMOYEE JOGENDRANATH MAHAVIDYALAYA

Govt. Aided General Degree College | Estd.: 2014
At+P.O.: Amdabad, P.S.: Nandigram, Dist.: Purba Medinipur, PIN 721650
www.sjmahavidyalaya.in Email: sjmahavidyalaya@gmail.com



Swarnamoyee Jogendranath Mahavidyalaya is located in Amdabad I Gram Panchayat, Nandigram II block, in the district of Purba Medinipur, West Bengal. The nearest motorable nodal points on highway 116B from the Gram Panchayat as well as the college, are 11 km (Heria) and 20 km (Chandipur) respectively. The district headquarters, Tamluk, and the subdivisional town of Haldia (also a commercial port) are 49 km and 42 km away, respectively, without any direct transport routes by bus or railways connecting Amdabad to these places. Totos, auto rickshaws and Tata Magic vans plying irregularly are the only available modes of transport in the college area, making dwellers of the region heavily dependent on personal modes of transportation. The predominant economic activity in the area is agriculture. Within this socio-economic and geographical context, the college offers the opportunity of undergraduate education to first-generation collegegoers. For the majority of our students, this is the only general degree college accessible physically, and therefore also, economically. In making higher education accessible to those who aspire for it in this geographically interior location, and in keeping pedagogy sensitive to context, lies our distinctiveness.

Despite limited financial resources, Swarnamoyee Jogendranath Mahavidyalaya has striven to provide quality education to local first-generation collegegoers since 2015. There are many elements in the curriculum of various subjects that require or assume an exposure that is not accessible to our students. For example, students of literature would benefit from witnessing professional dramatic performances. The distance from the nearest metropolis and the limited funds of the college imply that we are unable to take our students to such performances or organize performances by professional troupes in college. The teacher then has to compensate for this shortfall in some way, and one of them is getting students to view recordings of dramatic performances. Once again, the limited infrastructure of the college more often than not has meant that the teacher has to organize such in-class 'screening' on her own device.

While every effort is made to augment the collection of the college library, there are many areas in the curriculum that require resources beyond those that the college possesses at present. In the last few years, especially, the curriculum has been updated many times, and the teachers

have done their level best to provide from their personal collections primary and secondary material for students, which would not have been available to them otherwise.

After arriving in college, students also get a cultural exposure that they have not had before. On the various occasions during the year that we have cultural programmes, students are mentored by teachers to enrich their repertoire and hone their performance skills. There is a lot of talent amongst our students, but often they do not know how to make the best use of it. Nandigram and Khejuri abound in dramatic talent, as *yatra* performances are very common in this area. In college, students enthusiastic about putting up a dramatic performance often do not know the range of dramatic texts that would be suitable for an audience at an undergraduate institution. With a little bit of guidance, they do ultimately put up excellent dramatic performances.

In our student body, teachers recognize daily a lot of potential that has not received much guidance before. Apart from the curricular activities, our students need to be taught how to present themselves, how to speak publicly and so on and so forth. With the handholding that they receive from teachers, we can say that the majority of our students turn out as mature, polished individuals by the time they receive their undergraduate degree.

Curricular instruction is supplemented by seminars, webinars, and special lectures on a variety of issues and themes, which provide our students with the opportunity to interact with distinguished speakers, who are experts in their fields. Students' enthusiastic participation in these events show that these initiatives by the college do have a positive, formative impact on them. Add-on and value-added courses, and skills enhancement initiatives on a variety of topics have been offered by the departments to enrich the students academically, and enhance their employability. Students have been quick to recognize the opportunity such courses proffer, and their interest and performance in these courses show that they are able to value the instruction that the college provides. Students' active participation in various awareness programmes (on AIDS, dengue, special lecture against sexual harassment and so on) and observances (like Aranya Saptaha, Rabindra Jayanti, Independence Day, International Women's Day) organized by the college also show that these exercises serve to sensitize them in various ways. This holds out the hope that they will be dutiful citizens, and conscious, sensitive parents and guardians.

Year by year, our students' interest in pursuing Master's degrees after graduating is rising, which indicates that the education they have received at the undergraduate level has stimulated their interest in their respective fields. Given that the college is situated in the heart of an agricultural belt, with most of its students being first generation university-educated, the continued progression of our students into higher education underscores the positive impact of the college on its hinterland. Some of our students have also obtained placement in various services, while some choose to pursue professional courses like B.Ed. in preparation for a schoolteaching career. We are about to have our seventh batch of graduates, and the long-term impact of the education provided by the college is yet to be seen. The location map of the college for this section of the self-study report was designed by one of our former students, now pursuing a Master's degree in remote sensing and geographical information system, which is good reason to hope that students of the college will go on to make substantial contributions to society. It is our hope that with greater allocation of funds from various authorities, the college will gradually grow from strength to strength, and be able to widen its positive influence on the surrounding area.